



ASPIRE

WATERFALL CITY

ELEVATE YOUR LIFESTYLE, EMBRACE THE VIEW



ASPIRE

WATERFALL CITY

LUXURY REDEFINED, LIFE ELEVATED

Aspire Waterfall City is more than just a place to live—it's a statement of refined living in the heart of Waterfall City. With its elevated views of the stunning Gauteng skyline, Aspire offers a unique opportunity to experience both luxury and convenience in a world-class city.

Attacq
- CEO -

Jackie van Nickerk

Tricolit™
- Group Chairman -

Tim Kloeck



ASPIRE

WATERFALL CITY

Purposefully designed to provide residents with an exceptional lifestyle, where premium design, cutting-edge amenities, and direct access to the best shopping, dining, and business hubs come together seamlessly.

Aimed to redefine modern living while offering a sanctuary of sophistication and comfort.

PROUDLY DEVELOPED BY
ATTACQ  **TRICOLT.**






ASPIRE
WATERFALL CITY

Every aspect of this exclusive enclave is meticulously crafted to offer an unparalleled living experience, one that harmoniously blends timeless classical elegance with modern sophistication.



Refined architecture and attention to detail, ensures that each luxury residence exudes both grandeur and contemporary charm, making it the perfect sanctuary for those who appreciate the finer things in life.





ASPIRE
WATERFALL CITY

Elevate to a lifestyle that is both convenient and indulgent, with cutting-edge security systems and 24/7 surveillance ensuring peace of mind.

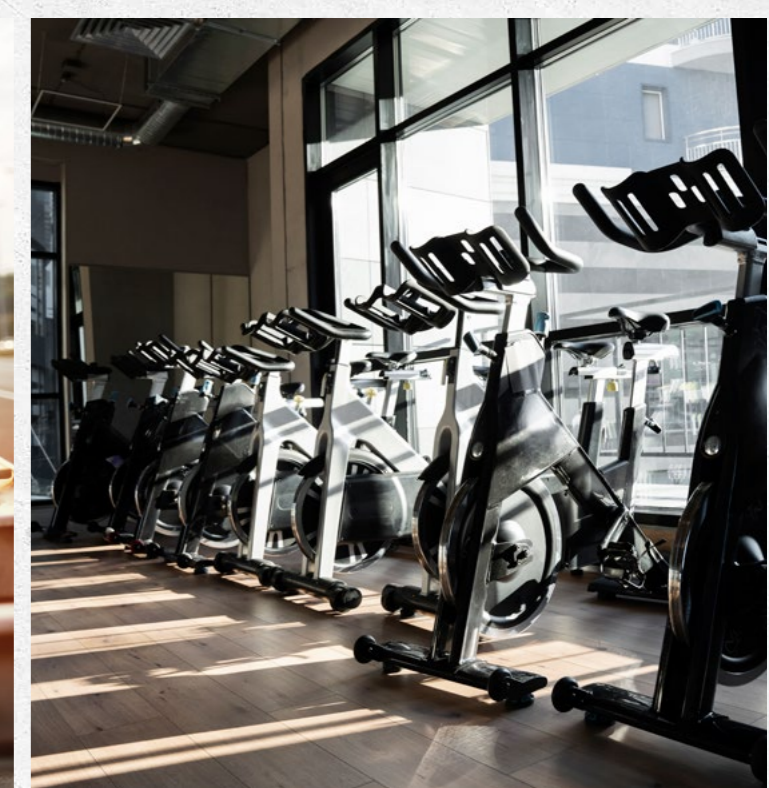
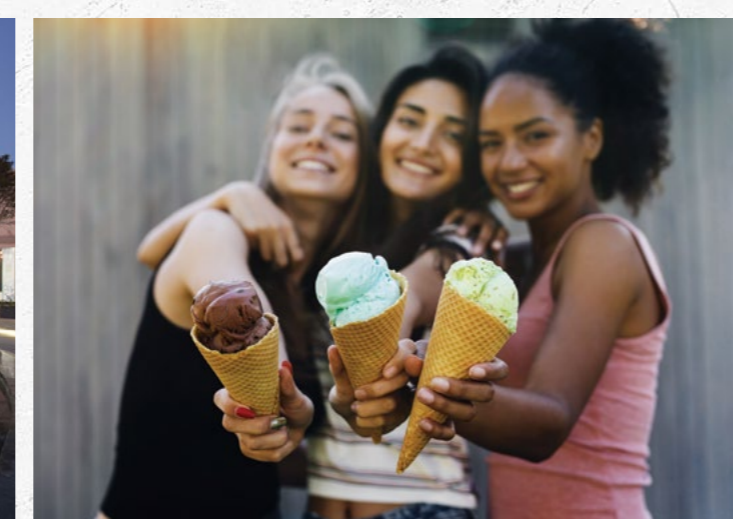
Whether you're heading to the office, going to the gym, or enjoying a night out, Aspire provides a truly elevated living experience, blending pure luxury with comfort, security, into one remarkable destination.



PREMIUM AMENITIES

- Restaurant
- Fire Pits & Bomas
- Landscaped Piazza
- Gym Facilities
- Leisure Swimming Pool & Bar
- Indoor Steam & Sauna Room
- 24-Hour Security, CCTV & Security
- Secure Basement Parking
- Storage Facilities
- Direct Pedestrian Access to Mall of Africa







ASPIRE

WATERFALL CITY

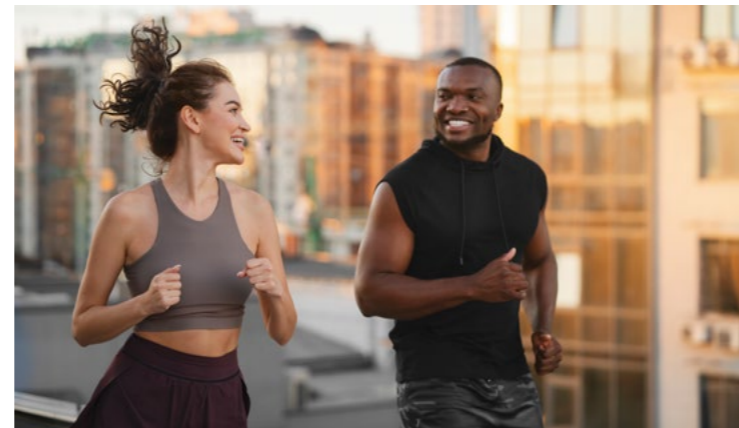
SUPERIOR SERVICES

- Private Dining
- Concierge Services
- App Driven Amenities
- High-Speed Fibre-Ready Apartments
- Back-Up Power
- Back-Up Water
- Electric Car Bays
- Sustainable Building Design



WATERFALL CITY AMENITIES

- Mall of Africa
- Netcare Waterfall City Hospital
- Private Schools (Curro, Reddam House)
- Gautrain Buses
- Running & Cycling Tracks
- 80+ Restaurant Options
- 4 Hotels
- Parkrun
- Virgin Active
- Waterfall Corner
- State-of-the-art Security
- Multiple Blue-Chip Corporates







SPECIFICATIONS

Paragon Architects together with Paragon Interiors have designed two beautiful colour schemes unique to Aspire - a classic and a platinum interior. The luxury apartments are defined by clean lines, a timeless palette and stunning detailing through depth of pattern and colour.

GENERAL

- Terraces/Balconies:

Double sliding doors, tile on screed
- Basement:

Secure basement parking

Broadband fibre will be provided in each apartment by WAN.

Apartment owners have the option to engage with a preferred list of internet service providers.



CLASSIC
SELECTION



PLATINUM
SELECTION



KITCHEN/LIVING

Sink	Undermounted stainless steel
Sink Mixer	Hansgrohe deck mounted sink mixer
Oven	60 cm Smeg oven
Hob	Smeg hob
Extractor	Integrated extractor excluding islands
Fridge / freezer combo	Integrated Smeg fridge/freezer combo
Microwave	Integrated Smeg stainless steel microwave
Dishwasher	Integrated Smeg dishwasher
Washing machine / tumble dryer combo	Integrated Smeg combo
Work tops	Engineered stone
Joinery	Satin
Splashback	Mirror
Flooring	Classic tile, laminate timber
Walls and ceilings	Painted

BEDROOMS

Flooring	Classic tile, laminate timber
Walls and ceilings	Painted
Skirting	Painted polymer skirtings
Built-in cupboards	Satin

BATHROOMS

Basin	White underslung
Basin mixer	Hansgrohe deck mounted
Toilet suite	White ceramic wall hung WC with concealed cistern
Floor and wall tiles	Classic tile to floors and selected walls
Additional	Toilet roll holder, towel rail and robe hooks
Shower screen	Frameless safety glass
Mirror	Overhead gravity hung mirror

KITCHEN/LIVING

Sink	Undermounted stainless steel
Sink Mixer	Hansgrohe deck mounted sink mixer
Oven	60 cm Smeg oven
Hob	Smeg hob
Extractor	Integrated extractor excluding islands
Fridge / freezer combo	Integrated Smeg fridge/freezer combo
Microwave	Integrated Smeg black microwave
Dishwasher	Integrated Smeg dishwasher
Washing machine / tumble dryer combo	Integrated Smeg combo
Work tops	Engineered stone
Joinery	Satin seno
Splashback	Engineered stone
Flooring	Platinum tile or platinum timber
Walls and ceilings	Painted

BEDROOMS

Flooring	Platinum tile or platinum timber
Walls and ceilings	Painted
Skirting	Painted polymer skirtings
Built-in cupboards	Satin seno with handle detail

BATHROOMS

Basin	White underslung
Basin mixer	Hansgrohe deck mounted
Toilet suite	White ceramic wall hung WC with concealed cistern
Floor and wall tiles	Platinum tile to floors and selected walls
Additional	Toilet roll holder and towel rail
Shower screen	Frameless safety glass
Mirror	Overhead gravity hung mirror with brushed bronze

PLATINUM PACKAGE

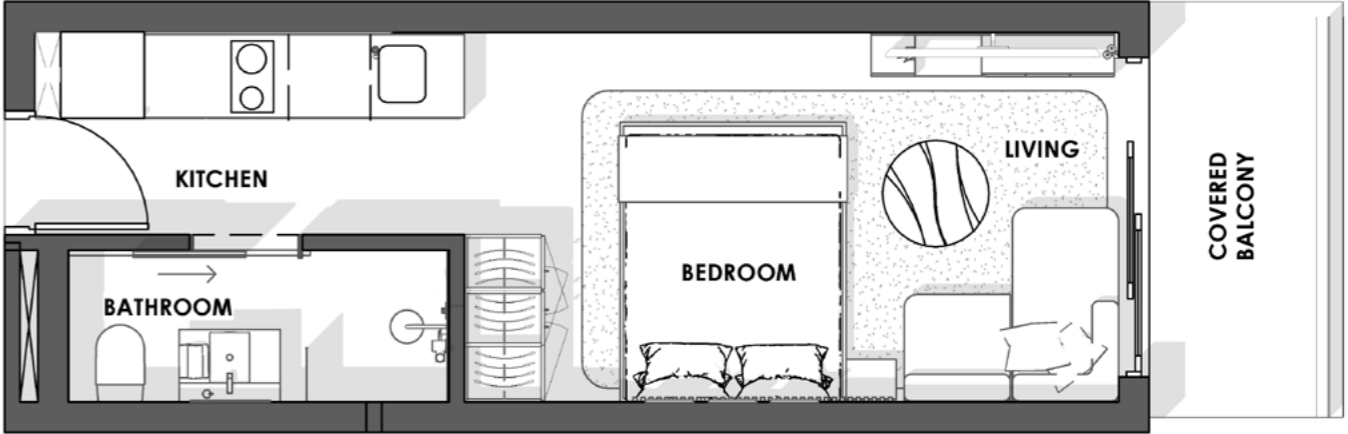
- Brushed bronze taps and bathroom accessories
- Full engineered stone cladding to shower upstands
- Frameless glass doors to en-suite bathrooms

ASPIRE
WATERFALL CITY



EXECUTIVE SUITE

Design and specifications are subject to change during the development process. Furniture not included. The developer and their appointed agents do not guarantee, warrant or represent that the information contained within this advertisement and marketing document is correct. Any interested parties should make their own enquiries as to the accuracy of the information. We exclude all inferred or implied terms, conditions and warranties arising out of this document and any liability for the loss or damage arising from them.



ASPIRE
WATERFALL CITY

EXECUTIVE SUITE

INTERNAL	26 - 31 m ²
COVERED BALCONY	3 - 4 m ²
TOTAL AREA	30 - 33 m ²

Design and specifications are subject to change during the development process. Furniture not included. The developer and their appointed agents do not guarantee, warrant or represent that the information contained within this advertisement and marketing document is correct. Any interested parties should make their own enquiries as to the accuracy of the information. We exclude all inferred or implied terms, conditions and warranties arising out of this document and any liability for the loss or damage arising from them.

ASPIRE
WATERFALL CITY

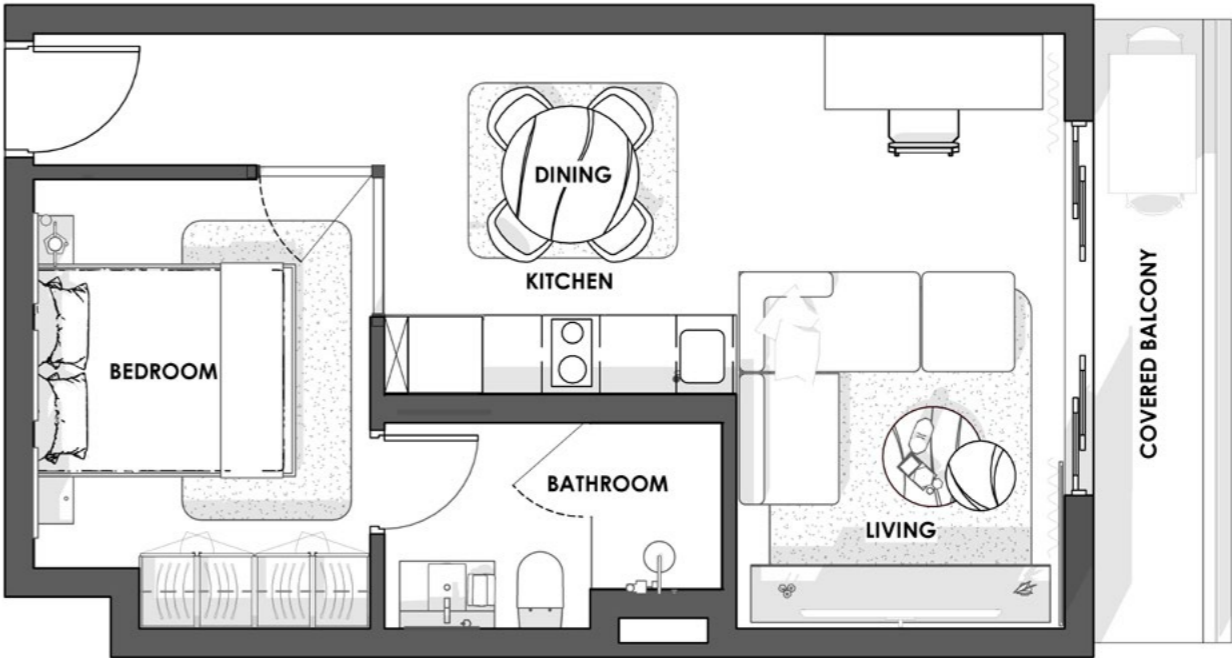


EXECUTIVE 1 BED

Design and specifications are subject to change during the development process. Furniture not included. The developer and their appointed agents do not guarantee, warrant or represent that the information contained within this advertisement and marketing document is correct. Any interested parties should make their own enquiries as to the accuracy of the information. We exclude all inferred or implied terms, conditions and warranties arising out of this document and any liability for the loss or damage arising from them.

ASPIRE
WATERFALL CITY

EXECUTIVE 1 BED



INTERNAL	44 m ²
COVERED BALCONY	6 m ²
TOTAL AREA	50 m ²

Design and specifications are subject to change during the development process. Furniture not included. The developer and their appointed agents do not guarantee, warrant or represent that the information contained within this advertisement and marketing document is correct. Any interested parties should make their own enquiries as to the accuracy of the information. We exclude all inferred or implied terms, conditions and warranties arising out of this document and any liability for the loss or damage arising from them.

PROUDLY DEVELOPED BY



ASPIRE
WATERFALL CITY

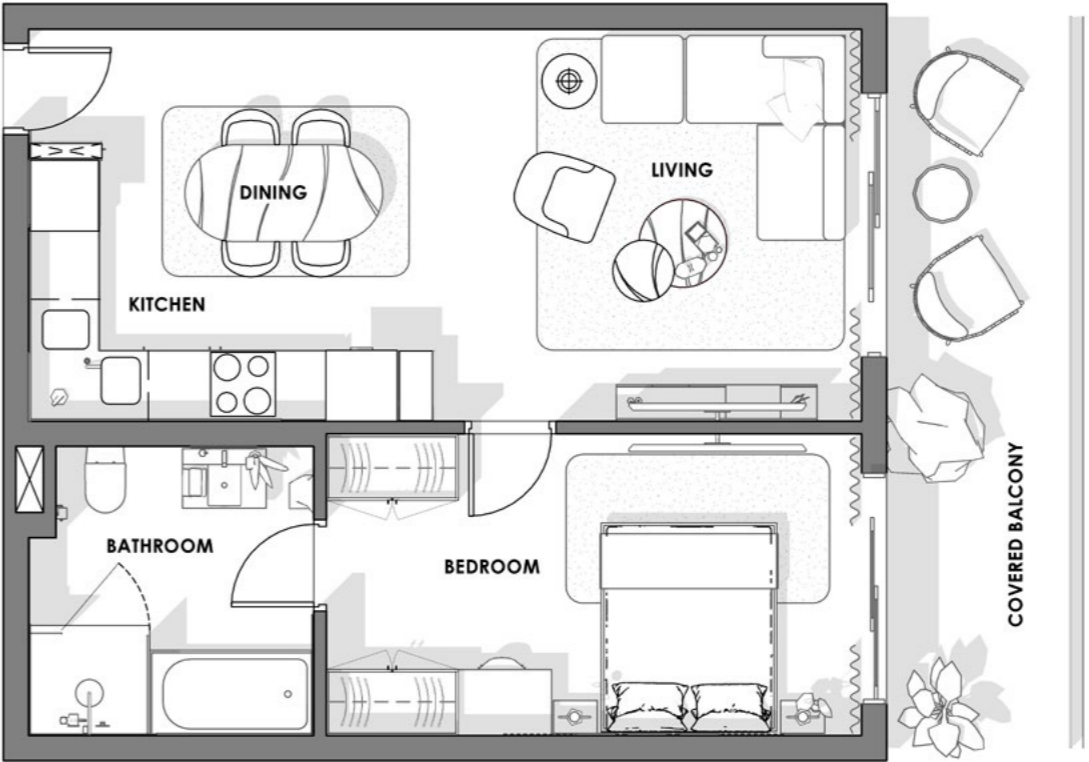


1 BEDROOM

Design and specifications are subject to change during the development process. Furniture not included. The developer and their appointed agents do not guarantee, warrant or represent that the information contained within this advertisement and marketing document is correct. Any interested parties should make their own enquiries as to the accuracy of the information. We exclude all inferred or implied terms, conditions and warranties arising out of this document and any liability for the loss or damage arising from them.

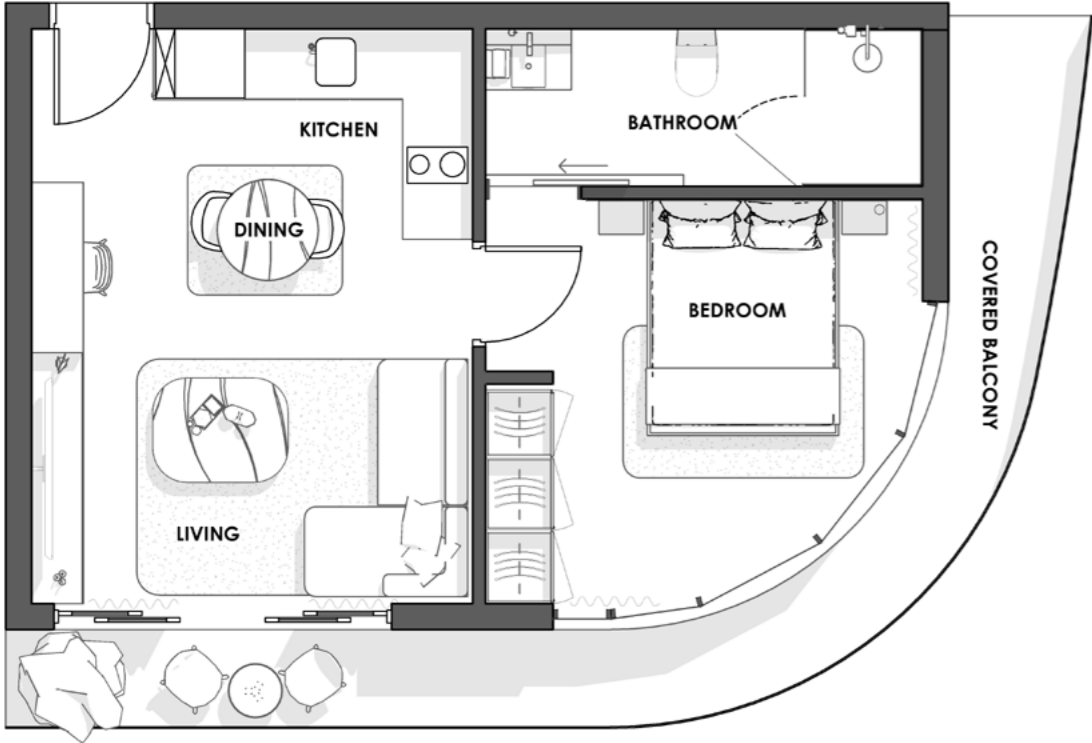
ASPIRE
WATERFALL CITY

1 BEDROOM (A)



INTERNAL	53 m ²
COVERED BALCONY	12 m ²
TOTAL AREA	65 m ²

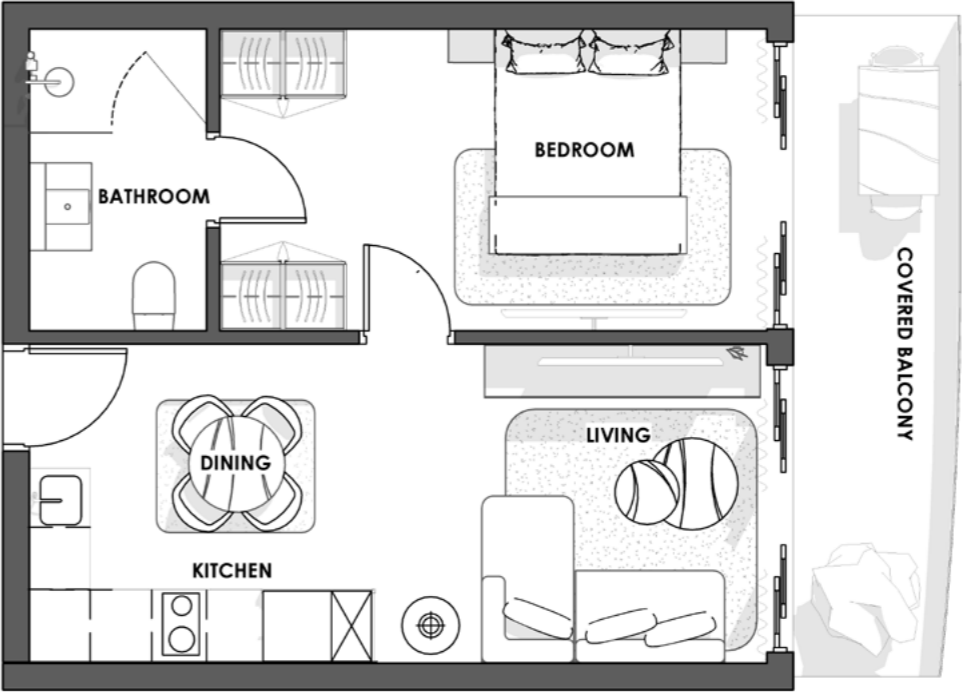
Design and specifications are subject to change during the development process. Furniture not included. The developer and their appointed agents do not guarantee, warrant or represent that the information contained within this advertisement and marketing document is correct. Any interested parties should make their own enquiries as to the accuracy of the information. We exclude all inferred or implied terms, conditions and warranties arising out of this document and any liability for the loss or damage arising from them.



ASPIRE

WATERFALL CITY

1 BEDROOM (B)	
INTERNAL	44 m ²
COVERED BALCONY	12 m ²
TOTAL AREA	56 m ²



ASPIRE

WATERFALL CITY

1 BEDROOM (C)	
INTERNAL	39 m ²
COVERED BALCONY	8 m ²
TOTAL AREA	47 m ²

Design and specifications are subject to change during the development process. Furniture not included. The developer and their appointed agents do not guarantee, warrant or represent that the information contained within this advertisement and marketing document is correct. Any interested parties should make their own enquiries as to the accuracy of the information. We exclude all inferred or implied terms, conditions and warranties arising out of this document and any liability for the loss or damage arising from them.

PROUDLY DEVELOPED BY
ATTACQ **TRICOLT**

Design and specifications are subject to change during the development process. Furniture not included. The developer and their appointed agents do not guarantee, warrant or represent that the information contained within this advertisement and marketing document is correct. Any interested parties should make their own enquiries as to the accuracy of the information. We exclude all inferred or implied terms, conditions and warranties arising out of this document and any liability for the loss or damage arising from them.

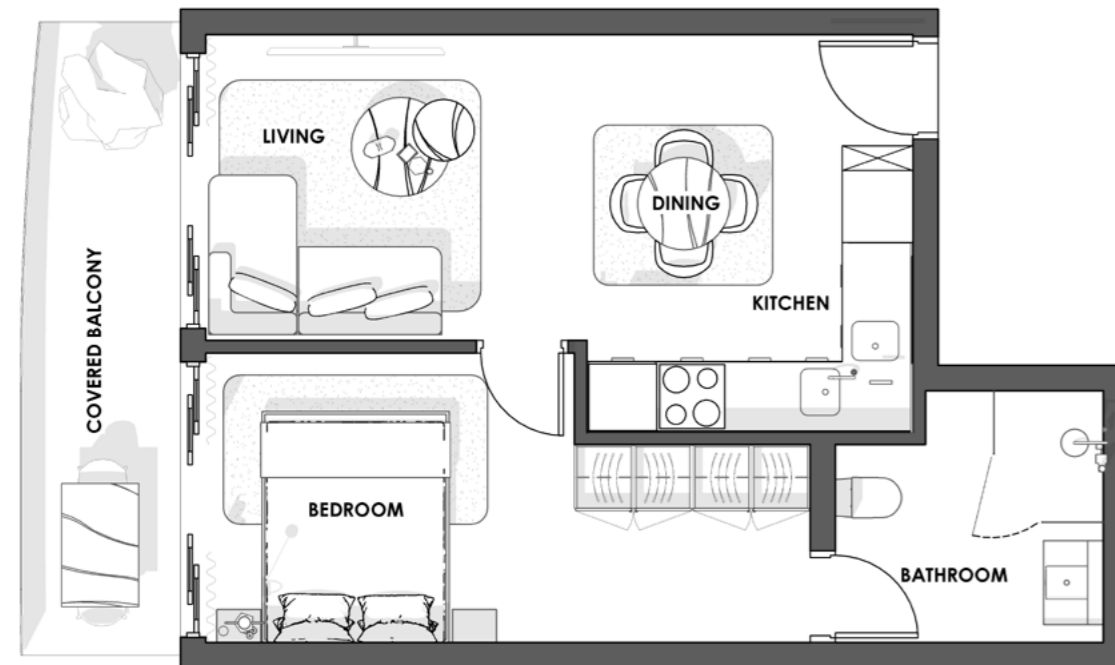
PROUDLY DEVELOPED BY
ATTACQ **TRICOLT**

ASPIRE

WATERFALL CITY

1 BEDROOM (D)

INTERNAL	44 m ²
COVERED BALCONY	8 m ²
TOTAL AREA	52 m ²



Design and specifications are subject to change during the development process. Furniture not included. The developer and their appointed agents do not guarantee, warrant or represent that the information contained within this advertisement and marketing document is correct. Any interested parties should make their own enquiries as to the accuracy of the information. We exclude all inferred or implied terms, conditions and warranties arising out of this document and any liability for the loss or damage arising from them.

PROUDLY DEVELOPED BY



ASPIRE
WATERFALL CITY

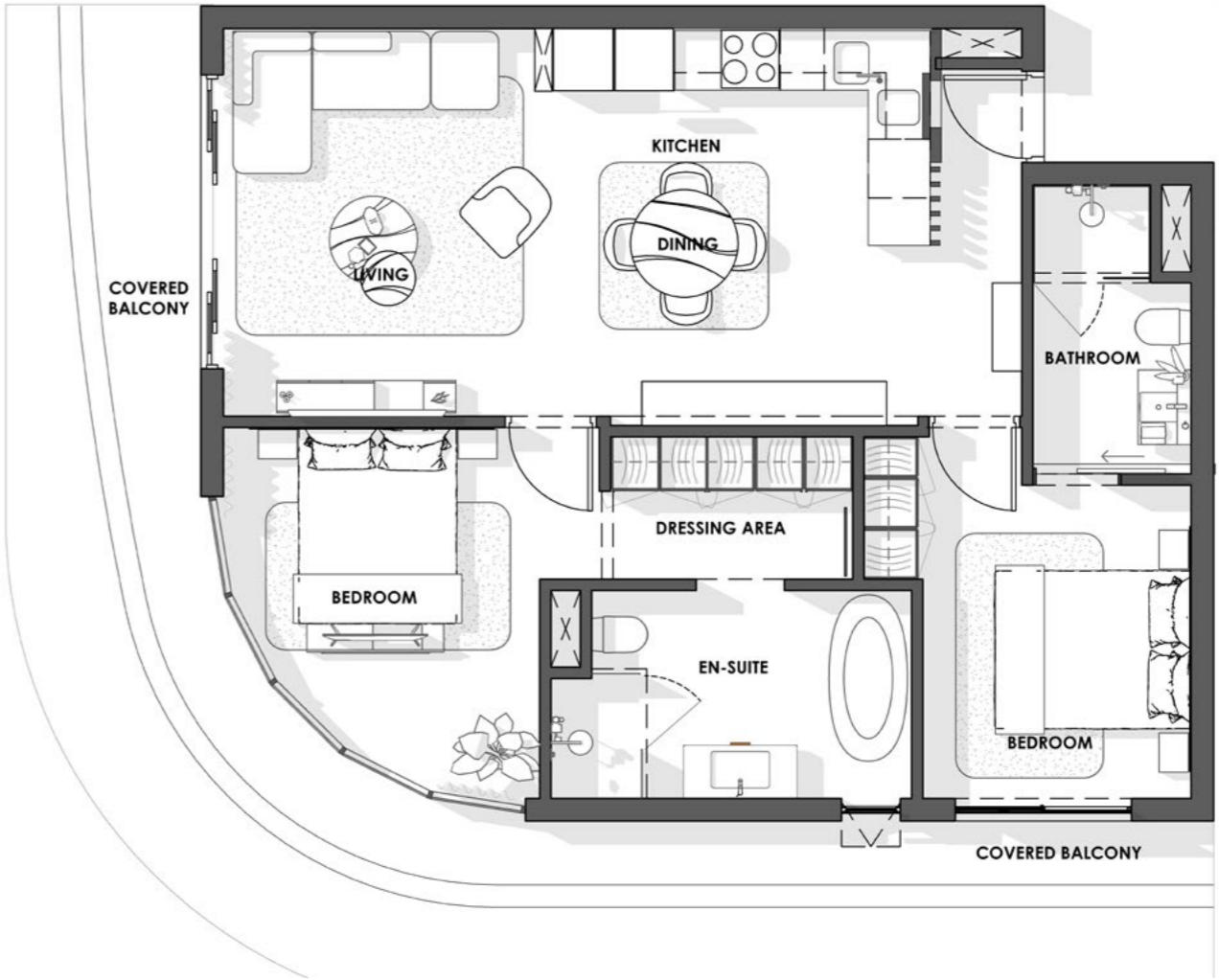


2 BEDROOM

Design and specifications are subject to change during the development process. Furniture not included. The developer and their appointed agents do not guarantee, warrant or represent that the information contained within this advertisement and marketing document is correct. Any interested parties should make their own enquiries as to the accuracy of the information. We exclude all inferred or implied terms, conditions and warranties arising out of this document and any liability for the loss or damage arising from them.

ASPIRE
WATERFALL CITY

2 BEDROOM (A)



INTERNAL	80 m ²
COVERED BALCONY	18 m ²
TOTAL AREA	98 m ²

Design and specifications are subject to change during the development process. Furniture not included. The developer and their appointed agents do not guarantee, warrant or represent that the information contained within this advertisement and marketing document is correct. Any interested parties should make their own enquiries as to the accuracy of the information. We exclude all inferred or implied terms, conditions and warranties arising out of this document and any liability for the loss or damage arising from them.



ASPIRE

WATERFALL CITY

2 BEDROOM (B)

INTERNAL	66 m ²
COVERED BALCONY	5 m ²
TOTAL AREA	71 m ²

Design and specifications are subject to change during the development process. Furniture not included. The developer and their appointed agents do not guarantee, warrant or represent that the information contained within this advertisement and marketing document is correct. Any interested parties should make their own enquiries as to the accuracy of the information. We exclude all inferred or implied terms, conditions and warranties arising out of this document and any liability for the loss or damage arising from them.

PROUDLY DEVELOPED BY
ATTACQ **TRICOLT.**

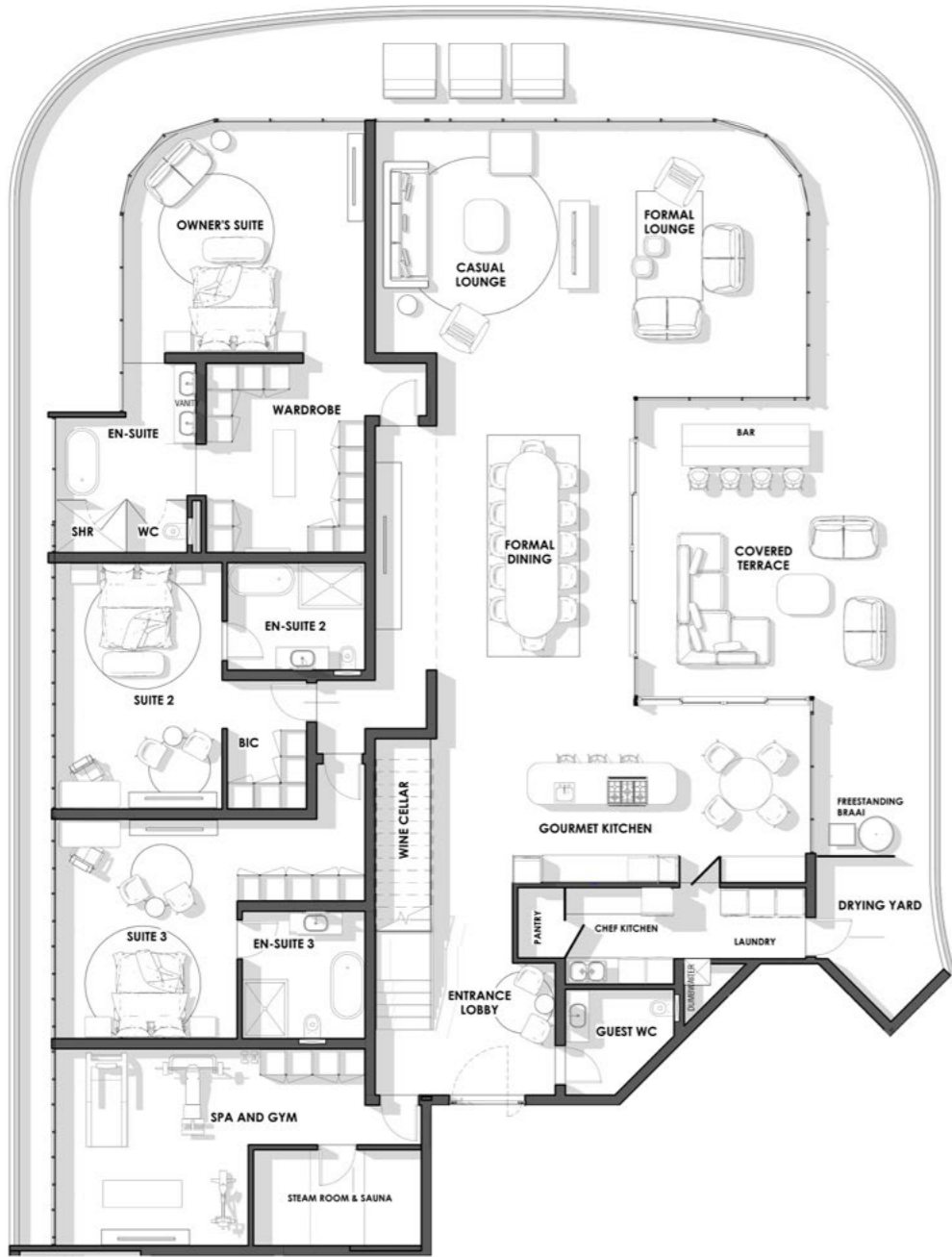




ASPIRE
WATERFALL CITY

Our commitment is to cater to the most discerning clientele, offering a lifestyle of extraordinary comfort and refinement that sets a new benchmark for ultra-luxury developments.



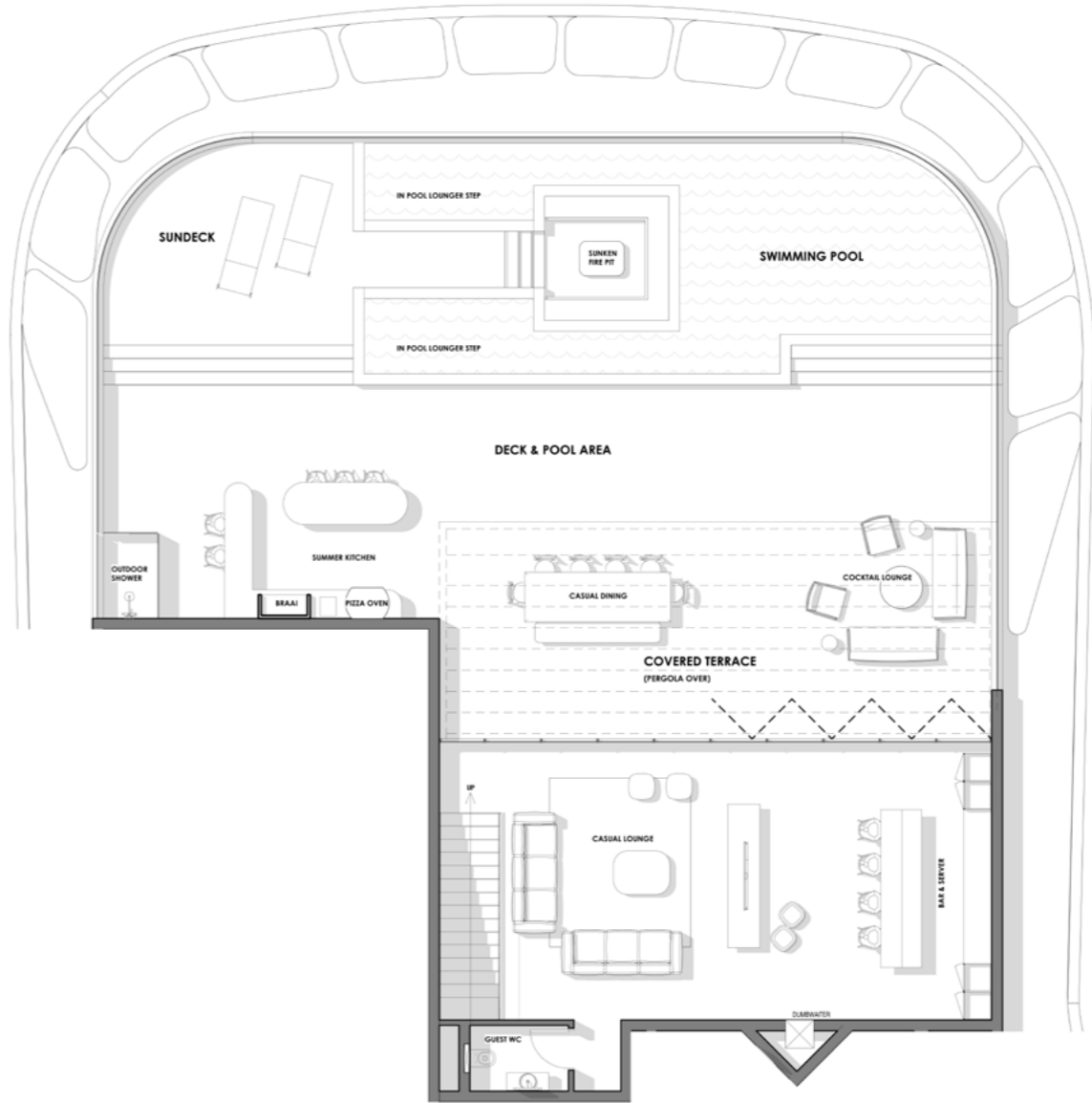


ASPIRE

WATERFALL CITY

MAIN LEVEL PENTHOUSE (A)

INTERNAL	366 m ²
COVERED BALCONY	165 m ²
TOTAL AREA	531 m ²



ASPIRE

WATERFALL CITY

UPPER LEVEL PENTHOUSE (A)

INTERNAL	73 m ²
ROOF TERRACE	226 m ²
TOTAL AREA	299 m ²

Design and specifications are subject to change during the development process. Furniture not included. The developer and their appointed agents do not guarantee, warrant or represent that the information contained within this advertisement and marketing document is correct. Any interested parties should make their own enquiries as to the accuracy of the information. We exclude all inferred or implied terms, conditions and warranties arising out of this document and any liability for the loss or damage arising from them.

Design and specifications are subject to change during the development process. Furniture not included. The developer and their appointed agents do not guarantee, warrant or represent that the information contained within this advertisement and marketing document is correct. Any interested parties should make their own enquiries as to the accuracy of the information. We exclude all inferred or implied terms, conditions and warranties arising out of this document and any liability for the loss or damage arising from them.




ASPIRE
WATERFALL CITY

By blending modern elegance with a rich cultural heritage, Aspire Waterfall City will be more than just a development; it is a beacon of excellence and a testament to the pursuit of the best in both lifestyle and community.

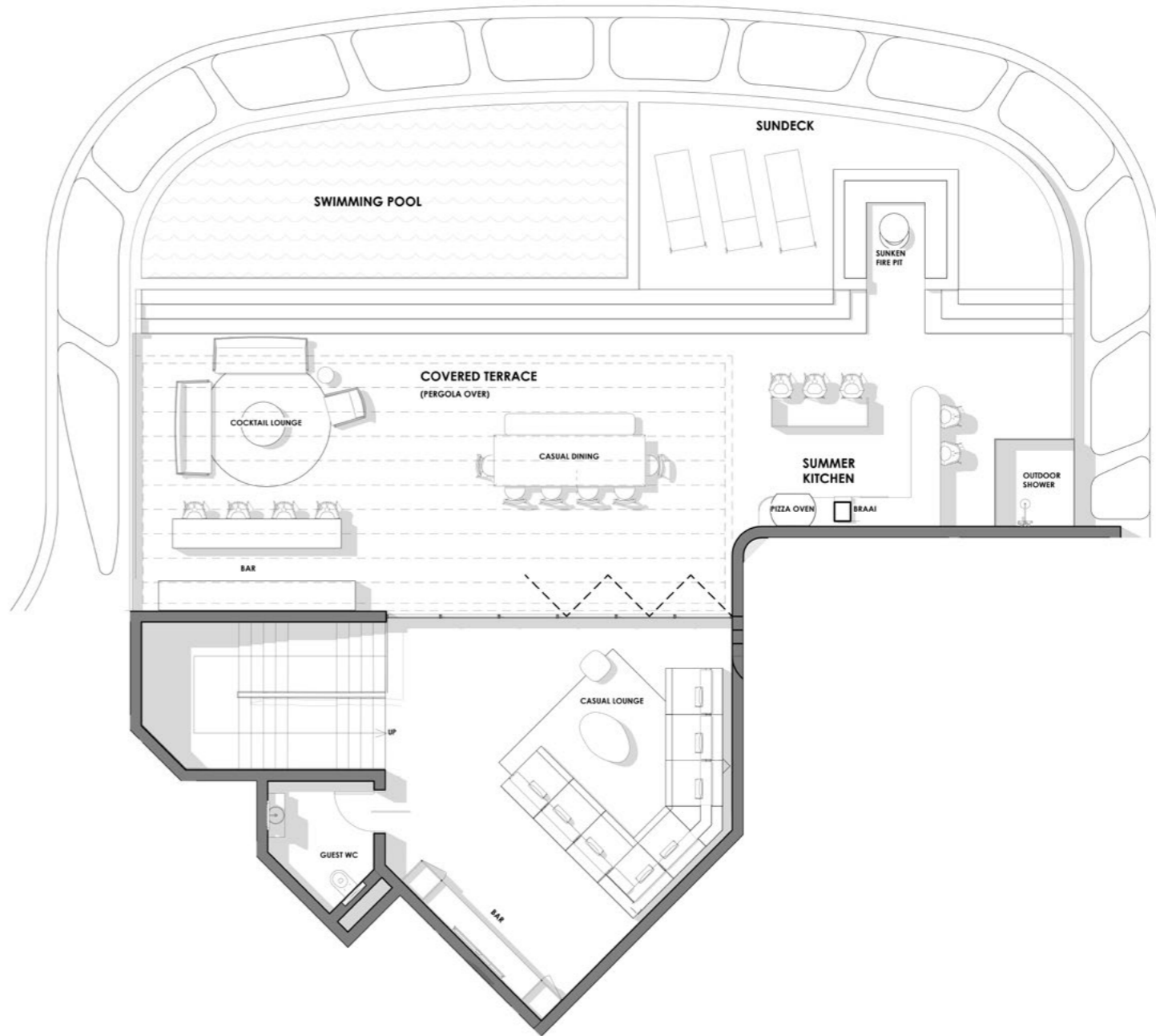


ASPIRE

WATERFALL CITY

MAIN LEVEL PENTHOUSE (B)

INTERNAL	204 m ²
COVERED BALCONY	40 m ²
TOTAL AREA	244 m ²



ASPIRE

WATERFALL CITY

UPPER LEVEL PENTHOUSE (B)

INTERNAL	54 m ²
ROOF TERRACE	185 m ²
TOTAL AREA	239 m ²

Design and specifications are subject to change during the development process. Furniture not included. The developer and their appointed agents do not guarantee, warrant or represent that the information contained within this advertisement and marketing document is correct. Any interested parties should make their own enquiries as to the accuracy of the information. We exclude all inferred or implied terms, conditions and warranties arising out of this document and any liability for the loss or damage arising from them.

PROUDLY DEVELOPED BY
ATTACQ TRICOLT™

Design and specifications are subject to change during the development process. Furniture not included. The developer and their appointed agents do not guarantee, warrant or represent that the information contained within this advertisement and marketing document is correct. Any interested parties should make their own enquiries as to the accuracy of the information. We exclude all inferred or implied terms, conditions and warranties arising out of this document and any liability for the loss or damage arising from them.

PROUDLY DEVELOPED BY
ATTACQ TRICOLT™



SALES CENTRE & SHOW APARTMENT

Located in Mall of Africa – Shop 2003
Crystal Court, Entrance 20
(Opposite Tashas)



Sales: 0861 882 882
Email: info@tricoltd.co.za
Website: www.aspirewaterfallcity.co.za



PROUDLY DEVELOPED BY





ASPIRE

WATERFALL CITY

VISIT OUR SALES CENTRE & SHOW APARTMENT

Located in Mall of Africa – Shop 2003 (Opposite Tashas)

PROUDLY DEVELOPED BY

ATTACQ



TRICOLTTM